

Contents

Reported and Registered Births and Deaths 2006	Table 3.1, page 3		2006	
Vital Statistics Reported Data 2002 - 2006	Table 3.2, page 4		2006 - 2002	
Crude Registered Birth & Death Rate Per 1000 Population by Nationality 1997 - 2006	Figure 3.1, page 5	2006 - 1997	1000	
Reported Births by Place of Birth and Sex 2006	Table 3.3, page 6		2006	
Registered Live Births by Place of Birth, Sex and Father's Nationality 2006	Table 3.4, page 7	2006		
Registered Births by Place of Births and Father's Nationality 2006	Figure 3.2, page 8	2006		
Registered Live Births by Birth Weight, Mother's Nationality and Age Groups 2006	Table 3.5, page 9	2006		
Birth Weight in (kg) by Mother's Nationality 2006	Figure 3.3, page 10		2006	()
Registered Live Births by Birth Intervals, Mother's Nationality and Age Groups 2006	Table 3.6, page 11	2006		
Registered Still Births by Father's Nationality, Sex and Age of Fetus 2006	Table 3.7, page 12	2006		
Reported Deaths by Place, Nationality and Sex 2006	Table 3.8, page 13		2006	
Reported Deaths by Place, Nationality and Sex 2002 - 2006	Table 3.9, page 14		2006 - 2002	
Reported Deaths by Age Groups, Nationality and Sex 2006	Table 3.10, page 15		2006	
Death Rate Per 1000 Population by Age Groups, Nationality and Sex 2006	Figure 3.4, page 16	2006		1000
Reported Deaths by Cause of Death, Nationality and Sex 2006	Table 3.11, page 17		2006	
Number and Percentage of Reported Deaths by Nationality and Cause of Death 2006	Figure 3.5, page 19		2006	
Reported Deaths by Cause of Death and Age Groups 2006	Table 3.12, page 20		2006	
Reported Deaths by Cause of Death and Region 2006	Table 3.13, page 22		2006	
Death Rates Per 100,000 Population by Cause of Death, Year and Nationality 2002 - 2006	Table 3.14, page 24	2006 - 2002		100,000
The Top Ten Leading Causes of Death Per 100,000 Population 2002 - 2006	Table 3.15, page 26	2006 - 2002	100,000	
The Top Ten Leading Causes of Death Rates Per 100,000 Population 2002 - 2006	Figure 3.6, page 27	2006 - 2002	100,000	

المحتويات

Conventions

Reported Births: are births notified by Maternity hospitals in the Kingdom without issuing Birth certificate.

Registered Births: are births registered at Births & Deaths Registration Office at Public Health Directorate when a birth certificate is sought for a child. This is all births in the year including those that took place in the year and were registered during the 1st three months of the following year.

Total reported births figure is used in calculating births rates.

Three auditing studies were conducted on Infant Mortality to review 2004 data, and accordingly the data was reviewed and modified.

الإصطلاحات

:

:

3

2004

Table 3.1
2006
Reported and Registered Births and Deaths 2006

<i>Indicators</i>	<i>Registered</i>			<i>Reported</i>			
	<i>Total</i>	<i>Female</i>	<i>Male</i>	<i>Total</i>	<i>Female</i>	<i>Male</i>	
Births	Live	15,053	7,406	7,647	15,034	7,422	7,612
	Still	20	11	9	94	50	44
	Total	15,073	7,417	7,656	15,128	7,472	7,656
Deaths	2,240	907	1,333	2,317	938	1,379	

Note: Reported Births excluding born abroad .

Source: Birth and Death Registration Section - Public Health Directorate.

Table 3.2
2006 - 2002
Vital Statistics Reported Data 2002 - 2006

<i>Indicator</i>	<i>2006</i>	<i>2005</i>	<i>2004</i>	<i>2003</i>	<i>2002</i>	
Number						
Live births	15,034	15,123	14,915	14,568	13,525	
Still births	94	112	124	106	134	
Total births (live & still births)	15,128	15,235	15,039	14,674	13,659	()
Premature births	1,542	1,489	1,617	1,624	1,164	
Deaths among children < 5 Years						
< 7 days	34	43	54	45	29	
7 days to < 4 wks	22	33	31	28	22	4
4 wks to < 1 yr	59	58	50	34	43	4
< 1 yr	115	134	135	107	94	
1-4 yrs	37	31	26	31	27	4
< 5 yrs	152	165	161	138	121	5
Maternal deaths	2	1	3	3	3	
Total deaths	2,317	2,226	2,217	2,117	2,035	
Rates						
Crude birth rate/1000 population	20.2	20.9	21.1	21.1	20.1	1000
Still birth rate/1000 births	6.2	7.4	8.2	7.2	9.8	1000
Premature birth rate/1000 live births	102.6	98.5	108.4	111.5	86.1	1000
Sex ratio at birth : Male / (per 100 Female)	102.6	103.8	100.5	101.6	106.4	(100) / :
Mean of life expectancy at birth	74.8	74.8	73.8	73.8	73.8	
Perinatal mortality rate/1000 births	8.5	10.2	11.8	10.3	11.9	1000
Neonatal mortality rate/1000 live births	3.7	5.0	5.7	5.0	3.8	1000
Postneonatal mortality rate/1000 live births	3.9	3.8	3.4	2.3	3.2	1000
Infant mortality rate/1000 live births	7.6	8.9	9.1	7.3	7.0	1000
Under 5 yrs mortality/1000 live births	10.1	10.9	10.8	9.5	8.9	1000 5
Under 5 yrs mortality/1000 child<5yrs old	2.4	2.7	2.6	2.2	1.9	5
Maternal mortality rate/100,000 live births	13.3	6.6	20.1	20.6	22.2	100,000
Crude death rate/1000 population	3.1	3.1	3.1	3.1	3.0	1000

Note: a) All data excluding abroad births.

b) Deaths include some visitors.

c) Data were reviewed and updated on 23 April 2007.

. 2007 23

Table 3.3
2006
Reported Births by Place of Birth and Sex 2006

Place of Birth	Multiple Births		Total Births			Still Births		Live Births		
	Triplets & more	Twins	Total	Female	Male	Female	Male	Female	Male	
MOH Hospitals	5	143	10,588	5,220	5,368	30	34	5,190	5,334	
Salmaniya Medical Complex	5	135	5,973	2,953	3,020	26	25	2,927	2,995	
Muharraq Maternity Hospital	-	1	1,282	604	678	1	1	603	677	
Jidhafs Maternity Hospital	-	7	3,293	1,644	1,649	3	8	1,641	1,641	
Sitra Maternity Hospital	-	-	22	10	12	-	-	10	12	
Western Region Maternity Hospital	-	-	10	4	6	-	-	4	6	
Riffa Maternity Hospital	-	-	8	5	3	-	-	5	3	
Military Hospital	-	42	3,088	1,559	1,529	14	8	1,545	1,521	
Private Hospitals	-	15	1,366	644	722	5	2	639	720	
International Hospital of Bahrain	-	7	185	79	106	-	1	79	105	
American Mission Hospital	-	4	424	195	229	1	-	194	229	
Awali Hospital	-	1	129	63	66	-	-	63	66	
Ibn Al-Nafees Hospital	-	-	104	51	53	-	-	51	53	
Bahrain Specialist Hospital	-	3	491	243	248	4	1	239	247	
Noor Specialist Hospital	-	-	33	13	20	-	-	13	20	
At Home and On route to Hospital	-	-	86	49	37	1	-	48	37	
Total *	5	200	15,128	7,472	7,656	50	44	7,422	7,612	*

* Excluding born abroad .

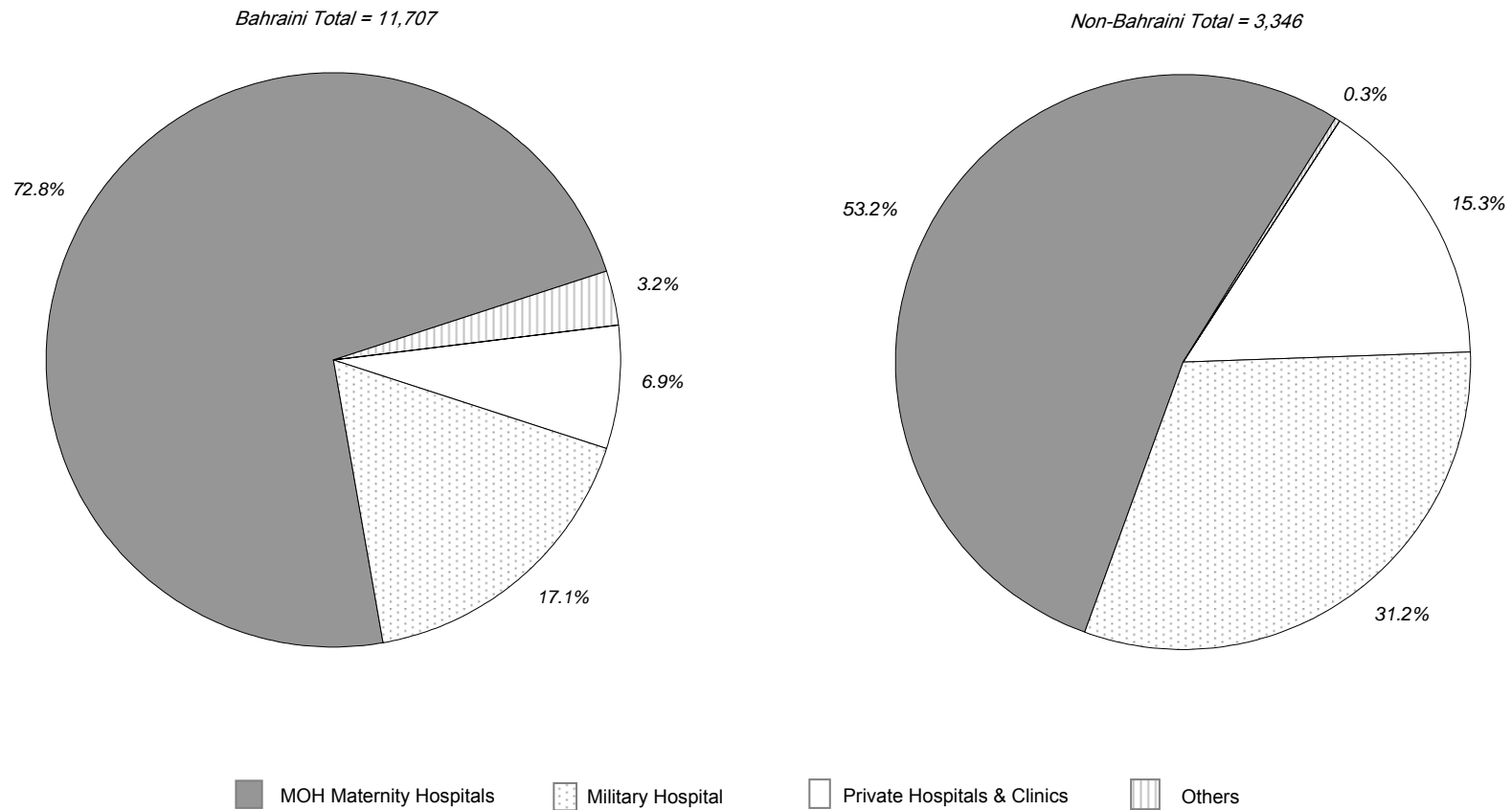
* لا تشمل المواليد في الخارج .

Source: Birth and Death Registration Section - Public Health Directorate.

Table 3.4
2006
Registered Live Births by Place of Birth, Sex and Father's Nationality 2006

<i>Place of Birth</i>	<i>Total</i>			<i>Non-Bahraini</i>			<i>Bahraini</i>		
	<i>Total</i>	<i>Female</i>	<i>Male</i>	<i>Total</i>	<i>Female</i>	<i>Male</i>	<i>Total</i>	<i>Female</i>	<i>Male</i>
MOH Hospitals	10,304	5,056	5,248	1,781	870	911	8,523	4,186	4,337
Salmaniya Medical Complex	5,774	2,832	2,942	969	466	503	4,805	2,366	2,439
Muharraq Maternity	1,248	589	659	309	156	153	939	433	506
Jidhafs Maternity	3,242	1,616	1,626	498	244	254	2,744	1,372	1,372
Sitra Maternity	22	11	11	-	-	-	22	11	11
Western Region Maternity	10	3	7	-	-	-	10	3	7
Riffa Maternity	8	5	3	5	4	1	3	1	2
Military Hospital	3,044	1,537	1,507	1,044	538	506	2,000	999	1,001
Private Hospitals	1,325	624	701	512	247	265	813	377	436
International Hospital of Bahrain	179	75	104	52	25	27	127	50	77
American Mission Hospital	412	189	223	218	100	118	194	89	105
Awali Hospital	126	62	64	66	32	34	60	30	30
Ibn Al-Nafees Hospital	100	51	49	32	19	13	68	32	36
Bahrain Specialist Hospital	475	234	241	131	66	65	344	168	176
Noor Specialist Hospital	33	13	20	13	5	8	20	8	12
At Home and On route to Hospital	53	32	21	8	3	5	45	29	16
Born Abroad	326	156	170	-	-	-	326	156	170
Others	1	1	-	1	1	-	-	-	-
Total	15,053	7,406	7,647	3,346	1,659	1,687	11,707	5,747	5,960

Figure 3.2
2006
Registered Live Births By Place of Births & Father's Nationality 2006



Reference: Table 3.4

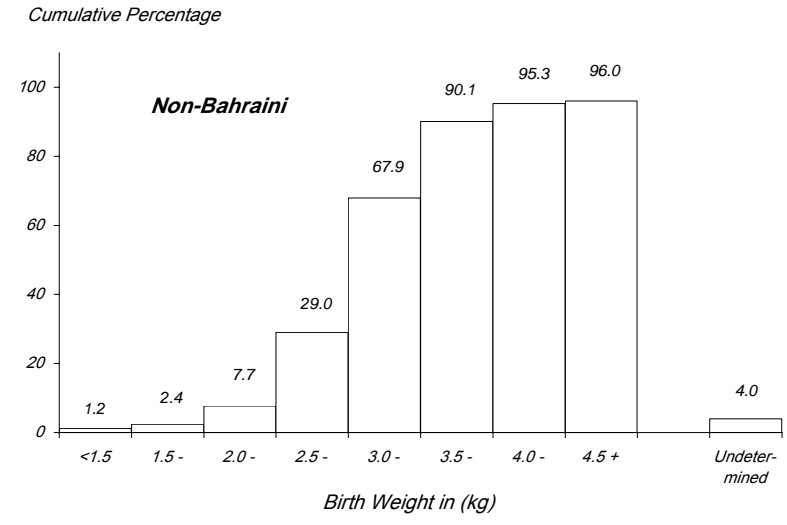
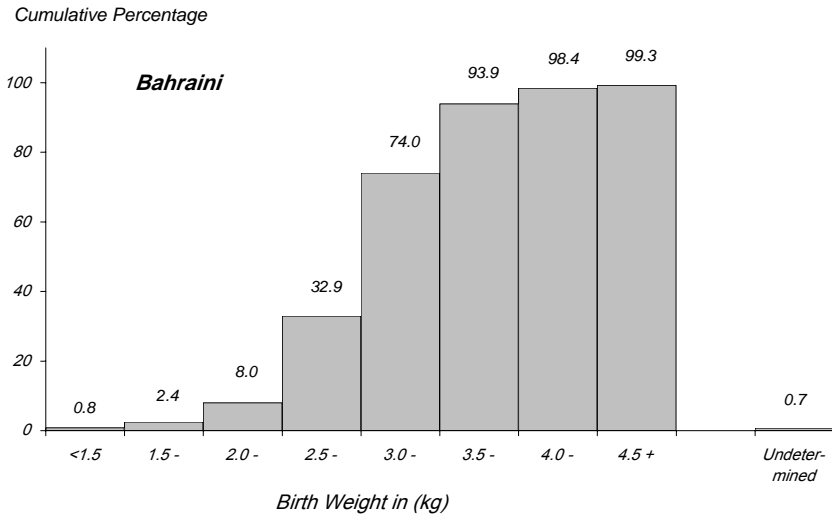
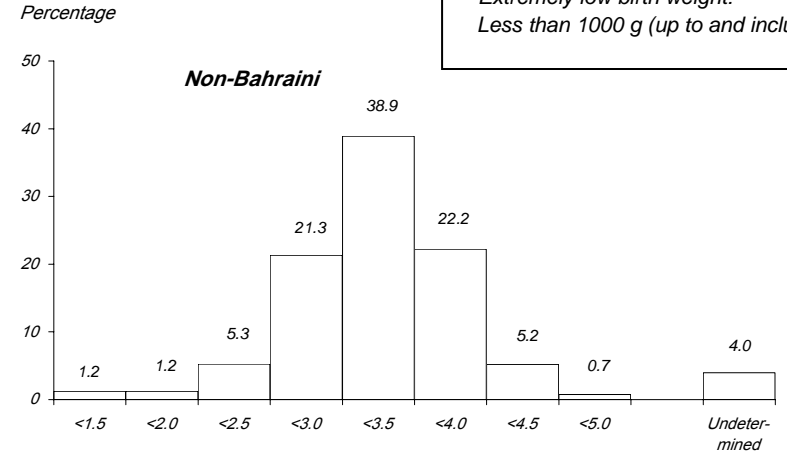
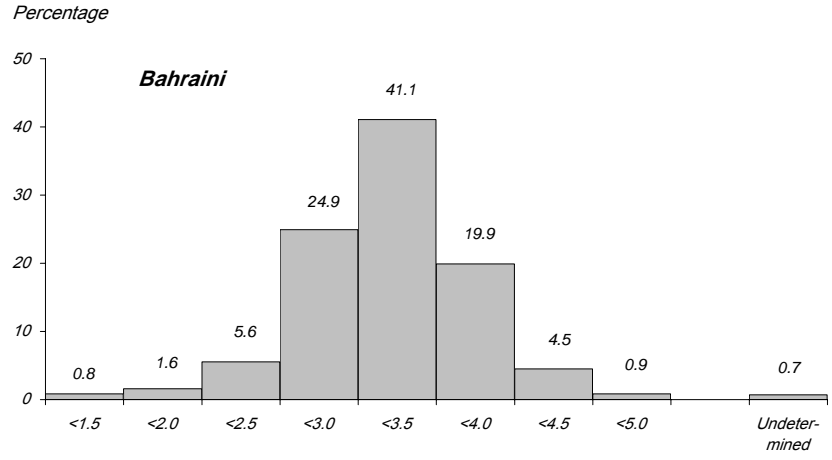
مرجع: جدول 3.4

Table 3.5
2006
Registered Live Births by Birth Weight, Mother's Nationality and Age Groups 2006

<i>Total</i>	<i>Birth weight (kg)</i>									<i>Mother</i>	
	<i>Undete- rmined</i>	<i>4.5+</i>	<i>4.0+</i>	<i>3.5+</i>	<i>3.0+</i>	<i>2.5+</i>	<i>2.0+</i>	<i>1.5+</i>	<i>Less than 1.5</i>	<i>Nationality</i>	<i>Age Groups</i>
1	-	-	-	-	1	-	-	-	-	Bah	less than 15
2	-	-	-	1	1	-	-	-	-	Non-Bah	
273	-	1	2	33	124	81	25	5	2	Bah	15-19
151	5	1	3	30	54	35	15	3	5	Non-Bah	
2,421	9	5	59	401	1030	708	156	42	11	Bah	20-24
949	48	2	34	178	384	221	62	11	9	Non-Bah	
3,399	17	31	127	653	1410	906	173	49	33	Bah	25-29
1,395	56	14	71	295	557	313	61	20	8	Non-Bah	
2,410	15	18	138	537	1007	506	125	39	25	Bah	30-34
1,255	42	10	66	300	488	249	63	13	24	Non-Bah	
1,501	24	24	106	348	554	328	79	27	11	Bah	35-39
558	22	5	47	141	199	109	25	7	3	Non-Bah	
559	9	12	44	126	216	107	30	9	6	Bah	40-44
124	3	-	8	41	42	19	7	-	4	Non-Bah	
32	1	-	3	10	10	7	1	-	-	Bah	45-49
17	-	1	1	4	5	4	1	-	1	Non-Bah	
2	-	-	-	-	2	-	-	-	-	Bah	50+
2	-	-	1	-	1	-	-	-	-	Non-Bah	
2	2	-	-	-	-	-	-	-	-	Bah	Unknown
-	-	-	-	-	-	-	-	-	-	Non-Bah	
10,600	77	91	479	2,108	4,354	2,643	589	171	88	Bah	
4,453	176	33	231	990	1,731	950	234	54	54	Non-Bah	Total
15,053	253	124	710	3,098	6,085	3,593	823	225	142	Total	

Figure 3.3
2006 ()
Births Weight (kg) By Mother's Nationality 2006

Note:
 - Low birth weight:
 Less than 2500 g (up to and including 2499 g).
 - Very low birth weight:
 Less than 1500 g (up to and including 1499 g).
 - Extremely low birth weight:
 Less than 1000 g (up to and including 999 g).



Reference: Table 3.5

مرجع: جدول 3.5

2006
Registered Live Births by Birth Intervals, Mother's Nationality and Age Groups 2006

<i>Total</i>	<i>Interval between current delivery and previous pregnancy</i>										<i>Mother</i>	
	<i>Undetermined</i>	<i>7+</i>	<i>6+</i>	<i>5+</i>	<i>4+</i>	<i>3+</i>	<i>2+</i>	<i>1+</i>	<i>Less than 1</i>	<i>NA</i>	<i>Nationality</i>	<i>Age Groups</i>
1	-	-	-	-	-	-	-	-	-	-	1 Bah	less than 15
2	-	-	-	-	-	-	-	-	-	-	2 Non-Bah	
273	1	-	-	-	2	5	17	34	1	213 Bah	15-19	
151	2	-	-	-	-	1	6	30	2	110 Non-Bah		
2,421	25	1	9	21	70	147	272	350	27	1,499 Bah	20-24	
949	9	5	3	14	20	70	148	212	14	454 Non-Bah		
3,399	19	55	88	164	301	513	648	560	21	1,030 Bah	25-29	
1,395	3	40	25	68	96	204	246	262	6	445 Non-Bah		
2,410	9	220	189	221	326	397	460	354	6	228 Bah	30-34	
1,255	11	119	69	112	133	176	209	179	6	241 Non-Bah		
1,501	1	302	130	184	202	218	222	171	1	70 Bah	35-39	
558	-	103	35	47	67	72	99	74	-	61 Non-Bah		
559	-	175	57	59	74	60	67	47	3	17 Bah	40-44	
124	-	31	7	13	15	16	20	13	1	8 Non-Bah		
32	-	12	3	3	3	3	5	2	-	1 Bah	45-49	
17	-	4	1	-	2	4	1	3	-	2 Non-Bah		
2	-	2	-	-	-	-	-	-	-	- Bah	50+	
2	-	-	-	-	-	1	-	-	-	1 Non-Bah		
2	-	-	-	-	-	-	-	-	-	2 Bah	Unknown	
-	-	-	-	-	-	-	-	-	-	- Non-Bah		
10,600	55	767	476	652	978	1,343	1,691	1,518	59	3,061 Bah		
4,453	25	302	140	254	333	544	729	773	29	1,324 Non-Bah	Total	
15,053	80	1,069	616	906	1,311	1,887	2,420	2,291	88	4,385 Total		

NA (Not Applicable) indicates 1st Delivery .

(NA)

Table 3.7
2006
Registered Still Births by Father's Nationality, Sex and Age of Fetus 2006

<i>Total</i>			<i>Non-Bahraini</i>			<i>Bahraini</i>			<i>()</i> <i>Age of Fetus (weeks)</i>
<i>Total</i>	<i>Female</i>	<i>Male</i>	<i>Total</i>	<i>Female</i>	<i>Male</i>	<i>Total</i>	<i>Female</i>	<i>Male</i>	
1	-	1	1	-	1	-	-	-	less than 28 wks
2	1	1	1	-	1	1	1	-	28
1	1	-	1	1	-	-	-	-	29
2	1	1	1	-	1	1	1	-	30
-	-	-	-	-	-	-	-	-	31
1	1	-	-	-	-	1	1	-	32
1	1	-	-	-	-	1	1	-	33
2	1	1	-	-	-	2	1	1	34
1	-	1	-	-	-	1	-	1	35
-	-	-	-	-	-	-	-	-	36
1	-	1	-	-	-	1	-	1	37
4	3	1	-	-	-	4	3	1	38
-	-	-	-	-	-	-	-	-	39
4	2	2	-	-	-	4	2	2	40 & over
20	11	9	4	1	3	16	10	6	Total

Note : Deaths include some visitors .

Source: Birth and Death Registration Section - Public Health Directorate.

Table 3.8
2006
Reported Deaths by Place, Nationality and Sex 2006

<i>Place of Death</i>	<i>Total</i>			<i>Non-Bahraini</i>			<i>Bahraini</i>		
	<i>Total</i>	<i>Female</i>	<i>Male</i>	<i>Total</i>	<i>Female</i>	<i>Male</i>	<i>Total</i>	<i>Female</i>	<i>Male</i>
Ministry of Health Hospitals	1,228	556	672	184	64	120	1,044	492	552
Salmaniya Medical Complex	1,200	544	656	182	64	118	1,018	480	538
Psychiatric Hospital	1	-	1	-	-	-	1	-	1
Jidhafs Maternity Hospital	-	-	-	-	-	-	-	-	-
Muharraq Maternity Hospital	-	-	-	-	-	-	-	-	-
Muharraq Geriatrics Hospital	18	9	9	-	-	-	18	9	9
Health Centers	9	3	6	2	-	2	7	3	4
Other Government Hospitals	253	101	152	37	14	23	216	87	129
Military Hospital	244	96	148	36	13	23	208	83	125
Essa Town Geriatric	4	2	2	1	1	-	3	1	2
Muharraq Social Care Center	5	3	2	-	-	-	5	3	2
Private Sector	32	13	19	6	3	3	26	10	16
Private Clinics & Polyclinics	3	2	1	2	1	1	1	1	-
American Mission Hospital	4	2	2	-	-	-	4	2	2
Awali Hospital	2	1	1	-	-	-	2	1	1
International Hospital of Bahrain	11	3	8	2	1	1	9	2	7
Ibn Al-Nafees Hospital	1	-	1	-	-	-	1	-	1
Bahrain Specialist Hospital	11	5	6	2	1	1	9	4	5
Home	479	195	284	124	38	86	355	157	198
Abroad	72	28	44	-	-	-	72	28	44
Other Places	253	45	208	161	29	132	92	16	76
Total	2,317	938	1,379	512	148	364	1,805	790	1,015

Table 3.9
2006 - 2002
Reported Deaths by Place, Nationality and Sex 2002 - 2006

<i>Place of Death</i>	<i>2006</i>	<i>2005</i>	<i>2004</i>	<i>2003</i>
Ministry of Health Hospitals	1,228	1,228	1,183	1,250
Salmaniya Medical Complex	1,200	1,191	1,150	1,203
Psychiatric Hospital	1	4	3	3
Jidhafs Maternity Hospital	-	-	1	-
Muharraq Maternity Hospital	-	-	-	-
Muharraq Geriatrics Hospital	18	21	20	30
Health Centers	9	12	9	14
Other Government Hospitals	253	244	229	183
Military Hospital	244	241	226	180
Essa Town Geriatric	4	3	3	3
Muharraq Social Care Center	5	-	-	-
Private Sector	32	37	33	19
Private Clinics & Polyclinics	3	2	2	1
American Mission Hospital	4	5	9	4
Awali Hospital	2	3	3	2
International Hospital of Bahrain	11	12	10	7
Ibn Al-Nafees Hospital	1	-	1	1
Bahrain Specialist Hospital	11	15	8	4
Home	479	467	503	445
Abroad	72	64	88	60
Other Places	253	186	181	160
Total	2,317	2,226	2,217	2,117

Note: a) Data were reviewed and updated on 23 April 2007.

b) Deaths include some visitors .

. 2007 23

(:

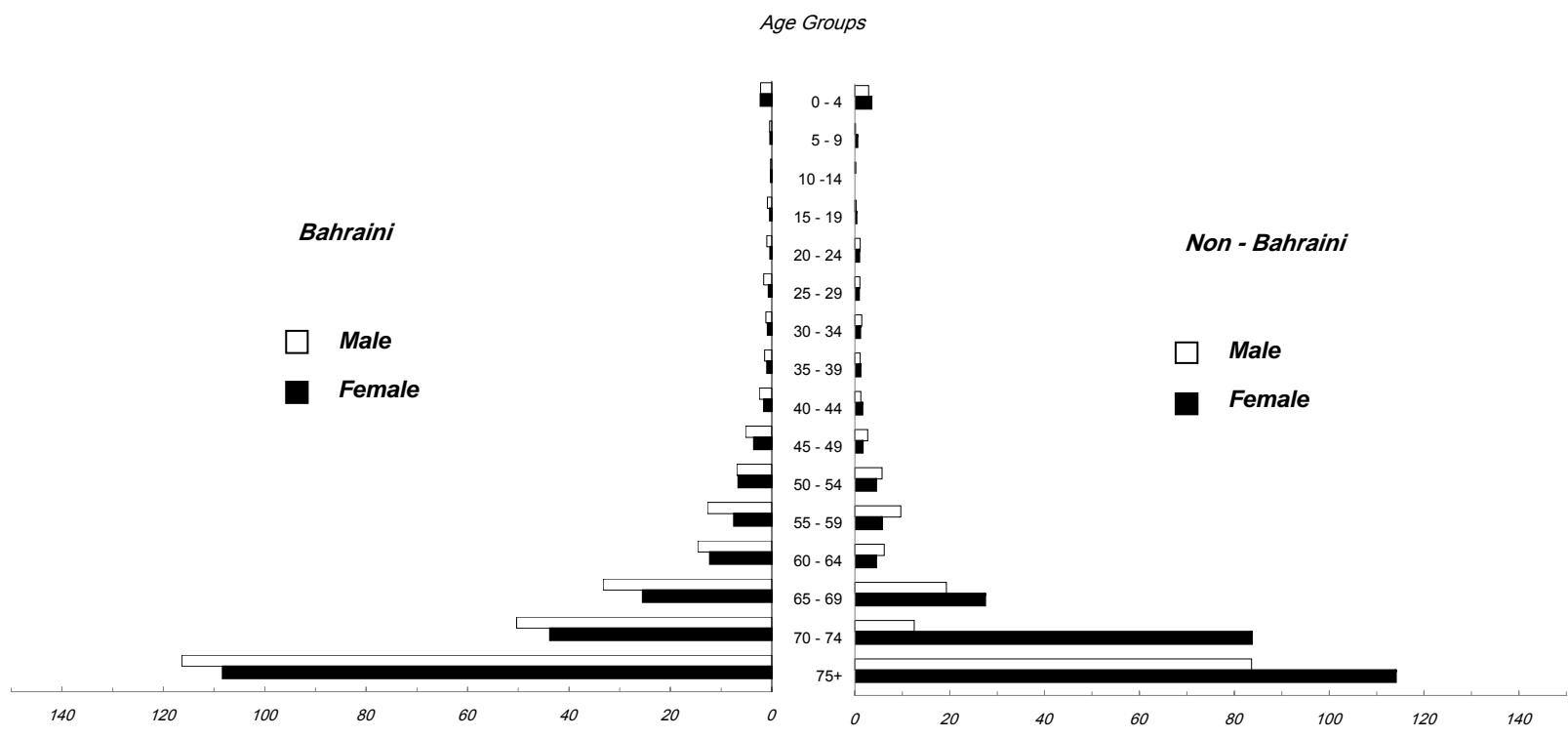
(

Table 3.10
2006
Reported Deaths by Age Groups, Nationality and Sex 2006

<i>Total</i>			<i>Non-Bahraini</i>			<i>Bahraini</i>						
<i>%</i>	<i>Total</i>	<i>Female</i>	<i>Male</i>	<i>%</i>	<i>Total</i>	<i>Female</i>	<i>Male</i>	<i>%</i>	<i>Total</i>	<i>Female</i>	<i>Male</i>	() <i>Age Groups (Years)</i>
1.5	34	20	14	1.4	7	6	1	1.5	27	14	13	< 1 days
0.9	22	8	14	1.4	7	3	4	0.8	15	5	10	7 days to < 4 wks 4
2.5	59	27	32	3.1	16	7	9	2.4	43	20	23	4 wks to < 1 yr 4
1.6	37	20	17	2.7	14	7	7	1.3	23	13	10	1 - 4
1.0	24	10	14	0.8	4	3	1	1.1	20	7	13	5 - 9
0.5	11	3	8	0.2	1	-	1	0.6	10	3	7	10 -14
1.4	33	9	24	0.4	2	1	1	1.7	31	8	23	15 - 9
2.2	51	13	38	4.7	24	8	16	1.5	27	5	22	20 - 24
3.5	81	20	61	8.6	44	11	33	2.0	37	9	28	25 - 29
4.3	99	28	71	13.3	68	16	52	1.7	31	12	19	30 - 34
3.6	84	28	56	9.0	46	13	33	2.1	38	15	23	35 - 39
4.4	101	34	67	9.0	46	12	34	3.0	55	22	33	40 - 44
6.3	147	42	105	10.9	56	7	49	5.0	91	35	56	45 - 49
6.6	152	50	102	11.5	59	9	50	5.2	93	41	52	50 - 54
5.9	136	42	94	7.4	38	5	33	5.4	98	37	61	55 - 59
5.7	132	60	72	2.0	10	2	8	6.8	122	58	64	60 - 64
9.0	208	95	113	3.3	17	7	10	10.6	191	88	103	65 - 69
11.1	257	125	132	3.1	16	12	4	13.4	241	113	128	70 - 74
28.0	649	304	345	7.2	37	19	18	33.9	612	285	327	75+
100.0	2,317	938	1,379	100.0	512	148	364	100.0	1,805	790	1,015	Total

Note : Deaths include some visitors .

Figure 3.4
2006 **1000**
Death Rate per 1000 population By Age Groups, Nationality & Sex 2006



Reference: Table 3.10 ,2.2

مرجع: جدول 3.10 و 2.2

Table 3.11
2006
Reported Deaths by Cause of Death, Nationality and Sex 2006

<i>Cause of Death</i>	<i>Nationality / Sex</i> /												<i>ICD-10 Code</i>
	<i>Total</i>				<i>Non Bahraini</i>				<i>Bahraini</i>				
	<i>Total</i>		<i>F</i>	<i>M</i>	<i>Total</i>		<i>F</i>	<i>M</i>	<i>Total</i>		<i>F</i>	<i>M</i>	
	<i>%</i>	<i>No.</i>			<i>%</i>	<i>No.</i>			<i>%</i>	<i>No.</i>			
Certain infectious & parasitic diseases	3.7	85	39	46	2.7	14	3	11	3.9	71	36	35	A00-B99
Neoplasms	10.9	253	129	124	4.7	24	14	10	12.7	229	115	114	C00-D49
Diseases of the blood and blood-forming organs and certain disorders involving the immune mechanism	1.3	29	12	17	0.2	1	1	-	1.6	28	11	17	D50-D89
Endocrine, nutritional and metabolic diseases	14.8	344	157	187	6.6	34	16	18	17.2	310	141	169	E00-E90
Mental and behavioural disorders	0.35	8	2	6	0.6	3	-	3	0.3	5	2	3	F00-F99
Diseases of the nervous system	1.9	44	19	25	2.1	11	6	5	1.8	33	13	20	G00-G99
Diseases of the circulatory system	19.4	449	202	247	16.4	84	25	59	20.2	365	177	188	I00-I99
Diseases of the respiratory system	5.5	127	55	72	1.2	6	4	2	6.7	121	51	70	J00-J99
Diseases of the digestive system	2.5	58	23	35	1.2	6	1	5	2.9	52	22	30	K00-K99
Diseases of the skin and subcutaneous tissue	0.9	22	10	12	0.6	3	1	2	1.1	19	9	10	L00-L99

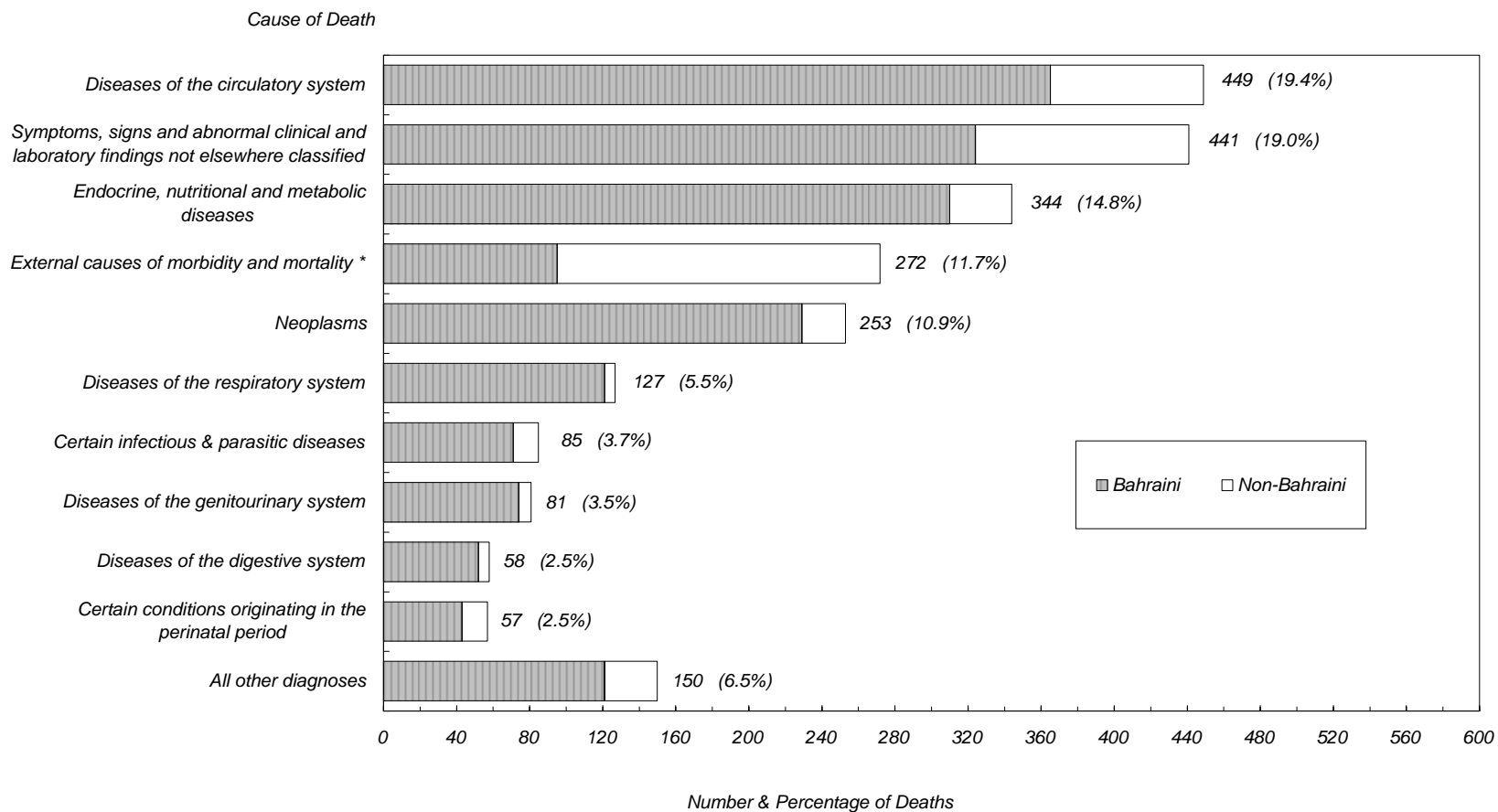
(Cont'd) Table 3.11 ()
 2006
 Reported Deaths by Cause of Death, Nationality and Sex 2006

Cause of Death	Nationality / Sex /												ICD-10 Code
	Total				Non Bahraini				Bahraini				
	Total		F	M	Total		F	M	Total		F	M	
	%	No.			%	No.			%	No.			
Diseases of the musculoskeletal system and connective tissue	0.3	6	3	3	0.2	1	-	1	0.3	5	3	2	M00-M99
Diseases of the genitourinary system	3.5	81	36	45	1.4	7	3	4	4.1	74	33	41	N00-N99
Pregnancy, childbirth and the puerperium	0.1	2	2	-	-	-	-	-	0.1	2	2	-	O00-O99
Certain conditions originating in the perinatal period	2.5	57	26	31	2.7	14	7	7	2.4	43	19	24	P00-P99
Congenital malformation, deformations and chromosomal abnormalities	1.7	39	18	21	2.0	10	6	4	1.6	29	12	17	Q00-Q99
Symptoms, signs and abnormal clinical and laboratory findings not elsewhere classified	19.0	441	134	307	22.9	117	21	96	18.0	324	113	211	R00-R99
External causes of morbidity and mortality *	11.7	272	71	201	34.6	177	40	137	5.3	95	31	64	V00-Y98
Factors influencing health status and contact with health services	-	-	-	-	-	-	-	-	-	-	-	-	Z00-Z99
Total	100.0	2,317	938	1,379	100.0	512	148	364	100.0	1,805	790	1,015	

* The increment in the deaths of External Causes of Morbidity and Mortality was mainly due to the accident of drowning "Dana Dhow". () *

Note : Deaths include some visitors .

Figure 3.5
2006
Number & Percentage of Reported Deaths by Nationality and Cause of Death 2006



Reference: Table 3.11

3.11 :

* The increment in the deaths of External Causes of Morbidity and Mortality was mainly due to the accident of drowning "Dana Dhow".

Table 3.12
2006
Reported Deaths by Cause of Death and Age Groups 2006

Cause of Death	Total	Age groups																	ICD-10 Code
		75+	70-74	65-69	60-64	55-59	50-54	45-49	40-44	35-39	30-34	25-29	20-24	15-19	10-14	5-9	1-4	<1 yr	
Certain infectious & parasitic diseases	85	39	7	4	2	2	3	7	7	4	4	1	-	2	-	-	1	2	A00-B99
Neoplasms	253	57	31	25	31	17	26	23	13	9	8	4	2	1	1	1	3	1	C00-D49
Diseases of the blood and blood-forming organs and certain disorders and the immune mechanism	29	1	-	-	2	-	1	2	-	2	4	6	5	3	-	1	2	-	D50-D89
Endocrine, nutritional and metabolic diseases	344	99	68	59	31	27	25	15	7	5	-	2	-	1	-	2	1	2	() E00-E90
Mental and behavioural disorders	8	-	-	-	-	-	2	2	1	1	1	-	-	-	-	1	-	-	F00-F99
Diseases of the nervous system	44	5	1	-	3	2	1	4	1	2	2	3	1	3	-	7	7	2	G00-G99
Diseases of the circulatory system	449	175	76	58	33	24	24	24	10	9	3	4	4	1	2	1	-	1	I00-I99
Diseases of the respiratory system	127	69	19	15	10	4	1	1	-	-	2	-	-	-	1	-	1	4	J00-J99
Diseases of the digestive system	58	20	6	8	2	5	4	5	4	1	1	-	1	-	-	-	1	-	K00-K99
Diseases of the skin and subcutaneous tissue	22	12	4	3	-	-	-	1	1	-	-	-	-	-	-	-	-	1	L00-L99
Diseases of the and musculoskeletal system connective tissue	6	2	-	-	-	-	-	1	-	1	-	-	-	1	-	1	-	-	M00-M99

(Cont'd) Table 3.12 ()
 2006
 Reported Deaths by Cause of Death and Age Groups 2006

Cause of Death	Total	Age groups																	ICD-10 Code
		75+	70-74	65-69	60-64	55-59	50-54	45-49	40-44	35-39	30-34	25-29	20-24	15-19	10-14	5-9	1-4	<1 yr	
Diseases of the genitourinary system	81	38	12	11	2	6	4	6	-	1	1	-	-	-	-	-	-	-	N00-N99
Pregnancy, childbirth and the puerperium	2	-	-	-	-	-	-	-	-	1	1	-	-	-	-	-	-	-	O00-O99
Certain conditions originating in the perinatal period	57	-	-	-	-	-	-	-	-	-	-	-	-	-	-	-	1	56	P00-P99
Congenital malformations, deformations and chromosomal abnormalities	39	-	-	-	-	-	-	-	-	-	-	-	-	-	-	1	7	31	Q00-Q99
Symptoms, signs and abnormal clinical and laboratory findings not elsewhere classified	441	123	30	23	14	35	44	38	32	26	23	17	9	3	1	3	6	14	R00-R99
External causes of morbidity and mortality *	272	9	3	2	2	14	17	18	25	22	49	44	29	18	6	6	7	1	V00-Y98
Factors influencing health status and contact with health services	-	-	-	-	-	-	-	-	-	-	-	-	-	-	-	-	-	-	Z00-Z99
Total	2,317	649	257	208	132	136	152	147	101	84	99	81	51	33	11	24	37	115	

* The increment in the deaths of External Causes of Morbidity and Mortality was mainly due to the accident of drowning "Dana Dhow". () *

Note : Deaths include some visitors .

Table 3.13
2006
Reported Deaths by Cause of Death and Region 2006

Cause of Death	Total	Region												ICD-10 Code
		Southern	مدينة Hamad Town	Western	Riffa	Isa Town	Central	Sitra	Northern	Jidhafs	Manama	Muharraq	Hidd	
Certain infectious and parasitic diseases	85	-	7	3	3	3	7	5	7	6	18	21	5	A00-B99
Neoplasms	253	-	17	11	30	23	17	21	18	18	38	50	10	C00-D49
Diseases of the blood and forming organs and certain disorders involving the immune mechanism	29	-	3	2	1	1	4	4	1	4	6	3	-	D50-D89
Endocrine, nutritional and metabolic diseases	344	1	20	10	46	41	24	16	15	28	61	72	10	() E00-E90
Mental and behavioural	8	-	-	-	-	-	-	-	1	3	2	2	-	F00-F99
Diseases of the nervous	44	-	3	5	8	1	3	3	2	4	6	9	-	G00-G99
Diseases of the circulatory system	449	3	19	16	39	31	41	34	29	34	111	88	4	I00-I99
Diseases of the respiratory system	127	-	8	19	8	9	7	9	11	16	24	14	2	J00-J99
Diseases of the digestive	58	-	2	4	6	5	1	4	3	8	15	10	-	K00-K99
Diseases of the skin and subcutaneous tissue	22	-	1	-	3	-	2	4	1	2	5	4	-	L00-L99
Diseases of the system and connective	6	-	1	-	-	1	1	1	-	1	1	-	-	M00-M99

(Cont'd) Table 3.13 ()
 2006
 Reported Deaths by Cause of Death and Region 2006

Cause of Death	Total	Region											ICD-10 Code	
		Southern	مدينة Hamad Town	Western	Riffa	Isa Town	Central	Sitra	Northern	Jidhafs	Manama	Muharraq		Hidd
Diseases of the system	81	1	1	3	5	8	4	7	6	10	14	22	-	N00-N99
Pregnancy, childbirth and the puerperium	2	-	-	1	-	-	-	-	1	-	-	-	-	O00-O99
Certain conditions in the perinatal period	57	-	7	1	6	4	9	3	3	1	13	10	-	P00-P99
Congenital malformations, deformations and abnormalities	39	-	5	1	4	2	5	2	2	3	8	6	1	Q00-Q99
Symptoms, signs and clinical and laboratory not elsewhere classified	441	2	26	14	49	30	24	25	24	34	121	83	9	R00-R99
External causes of and mortality *	272	4	15	10	23	10	14	23	12	17	111	29	4	V00-Y98
Factors influencing health contact with health services	-	-	-	-	-	-	-	-	-	-	-	-	-	Z00-Z99
Total	2,317	11	135	100	231	169	163	161	136	189	554	423	45	

* The increment in the deaths of External Causes of Morbidity and Mortality was mainly due to the accident of drowning "Dana Dhow". () *

Note : Deaths include some visitors .

Table 3.14
2006 - 2002 **100,000**
Death Rates per 100,000 Population by Cause of Death, Year and Nationality 2002 - 2006

Cause of Death	2006		2005		2004		2003		2002		رمز ICD-10 Code
	Non-Bah	Bah	Non-Bah	Bah	Non-Bah	Bah	Non-Bah	Bah	Non-Bah	Bah	
Certain infectious & parasitic diseases	4.9	15.5	3.6	18.7	4.1	15.5	3.8	16.8	5.1	13.2	A00-B99
Neoplasms	8.5	49.9	7.6	54.9	9.7	54.1	10.7	56.8	7.1	62.2	C00-D49
Diseases of the blood and blood-forming organs and certain disorders involving the immune mechanism	0.4	6.1	0.4	8.2	0.4	9.1	8.4	8.9	0.8	7.9	D50-D89
Endocrine, nutritional and metabolic diseases	12.0	67.5	9.8	45.9	8.9	40.8	8.4	34.1	10.6	38.8	() E00-E90
Mental and behavioural disorders	1.1	1.1	-	1.8	0.7	0.7	0.4	-	-	0.5	F00-F99
Diseases of the nervous system	3.9	7.2	2.5	9.1	1.9	8.4	2.3	7.0	1.6	7.9	G00-G99
Diseases of the circulatory system	29.6	79.5	27.2	80.0	27.9	94.2	43.2	113.1	47.6	110.0	I00-I99
Diseases of the respiratory system	2.1	26.4	6.5	27.9	3.3	26.5	5.7	29.9	7.1	24.6	J00-J99
Diseases of the digestive system	2.1	11.3	3.6	12.3	3.7	13.2	4.6	19.4	4.3	14.1	K00-K99
Diseases of the skin and subcutaneous tissue	1.1	4.1	0.7	10.5	0.7	8.9	0.4	10.3	-	7.2	L00-L99

(Cont'd) Table 3.14 ()
 2006 - 2002 100,000
 Death Rates per 100,000 Population by Cause of Death, Year and Nationality 2002 - 2006

Cause of Death	2006		2005		2004		2003		2002		رمز ICD-10 Code
	Non-Bah	Bah	Non-Bah	Bah	Non-Bah	Bah	Non-Bah	Bah	Non-Bah	Bah	
Diseases of the musculoskeletal system and connective tissue	0.4	1.1	0.7	0.4	0.7	0.9	-	-	-	0.2	M00-M99
Diseases of the genitourinary system	2.5	16.1	3.3	18.3	2.2	18.0	3.1	15.9	3.1	10.3	N00-N99
Pregnancy, childbirth and the puerperium	-	0.4	-	-	-	0.7	-	0.7	0.4	0.5	O00-O99
Certain conditions originating in the perinatal period	4.9	9.4	3.6	11.6	7.8	14.6	2.7	10.0	2.8	8.4	P00-P99
Congenital malformations, deformations and chromosomal abnormalities	3.5	6.3	3.3	8.5	4.1	8.2	3.4	10.5	4.7	7.9	Q00-Q99
Symptoms, signs and abnormal clinical and laboratory findings not elsewhere classified	41.3	70.6	38.4	72.0	35.7	77.4	16.8	53.0	12.6	65.1	R00-R99
External causes of morbidity and mortality *	62.4	20.7	39.8	21.2	41.6	19.9	37.9	19.6	35.0	21.3	V00-Y98
Factors influencing health status and contact with health services	-	-	-	1.1	-	-	-	-	-	-	Z00-Z99
Total	180.6	393.2	151.0	402.5	153.6	411.2	144.2	406.1	142.9	400.0	

* The increment in the deaths of External Causes of Morbidity and Mortality was mainly due to the accident of drowning "Dana Dhow". () *

Note: a) cause of death was based on ICD-10 electronically since 2003, though.

it was manually implemented since 1996.

b) deaths include some visitors .

Please refer to conventions regarding the rates mentioned in this table .

Table 3.15
2006 - 2002 **100,000**
The Top Ten Leading Causes of Death Per 100,000 Population 2002 - 2006

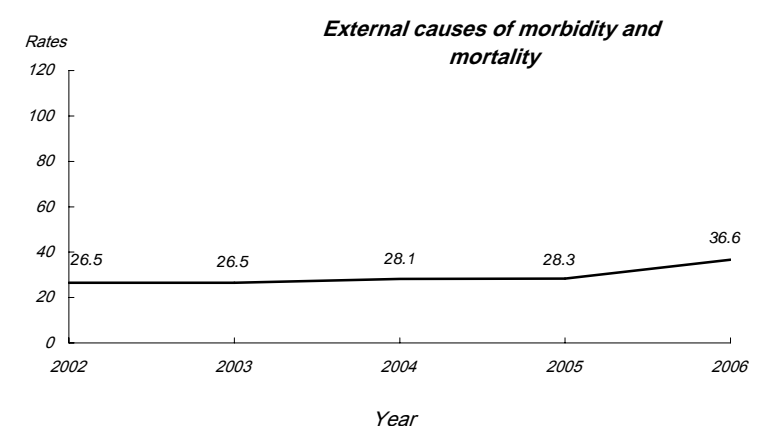
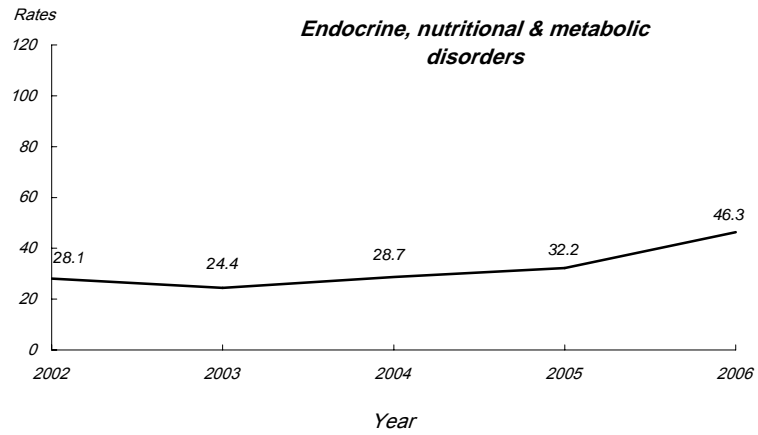
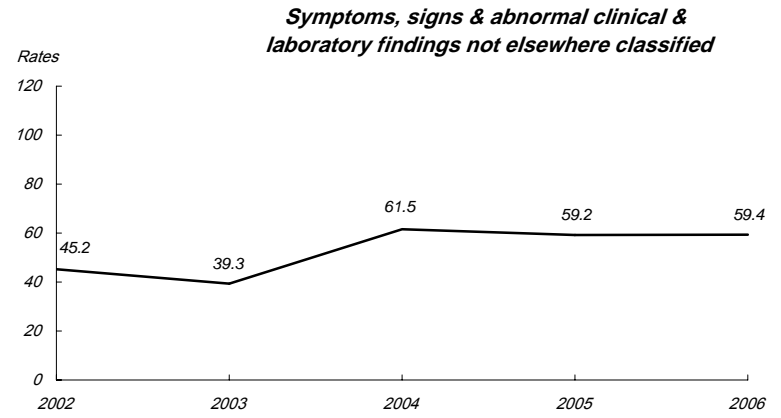
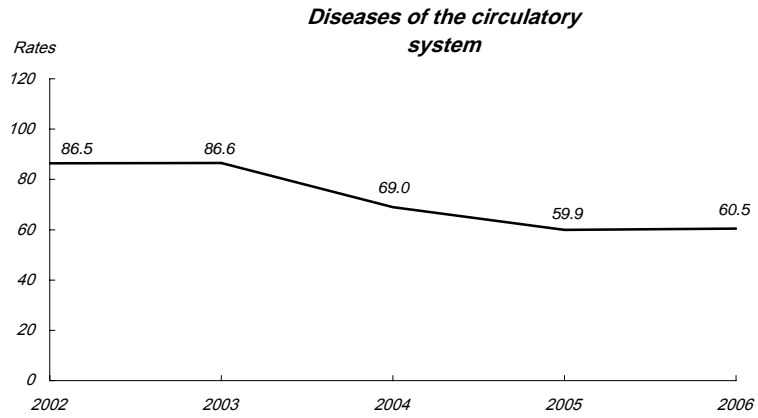
<i>%change</i> 06-05	<i>%change</i> 05-04	<i>%change</i> 04-03	<i>%change</i> 03-02	<i>%change</i> 02-01	2006	2005	2004	2003	2002	<i>Principal Diagnosis</i>	<i>ICD-10 Code</i>
1.0	-13.2	-20.3	0.2	0.2	60.5	59.9	69.0	86.6	86.5	Diseases of the circulatory system	I00-I99
0.3	-3.8	56.5	-13.1	-8.8	59.4	59.2	61.5	39.3	45.2	Symptoms, signs and abnormal clinical and laboratory findings not elsewhere classified	R00-R99
44.1	12.0	17.8	-13.3	12.9	46.3	32.2	28.7	24.4	28.1	() Endocrine, nutritional and metabolic diseases	E00-E90
29.5	0.5	6.0	0.2	-5.7	36.6	28.3	28.1	26.5	26.5	* External causes of morbidity and mortality *	V00-Y98
-7.5	-0.9	-5.4	-5.0	12.0	34.1	36.8	37.2	39.3	41.4	Neoplasms	C00-D49
-13.3	11.6	-14.8	15.2	11.3	17.1	19.7	17.7	20.7	18.0	Diseases of the respiratory system	J00-J99
-11.8	16.1	-6.1	17.5	35.3	11.4	13.0	11.2	11.9	10.1	Certain infectious & parasitic diseases	A00-B99
-13.1	4.5	9.0	45.3	-7.9	10.9	12.6	12.0	11.0	7.6	Diseases of the genitourinary system	N00-N99
-13.2	-6.4	-30.2	32.3	8.3	7.8	9.0	9.6	13.8	10.4	Diseases of the digestive system	K00-K99
-10.3	-28.8	65.7	16.1	-19.9	7.7	8.6	12.0	7.3	6.2	Certain conditions originating in the perinatal period	P00-P99

* The increment in the deaths of External Causes of Morbidity and Mortality was mainly due to the accident of drowning "Dana Dhow". () *

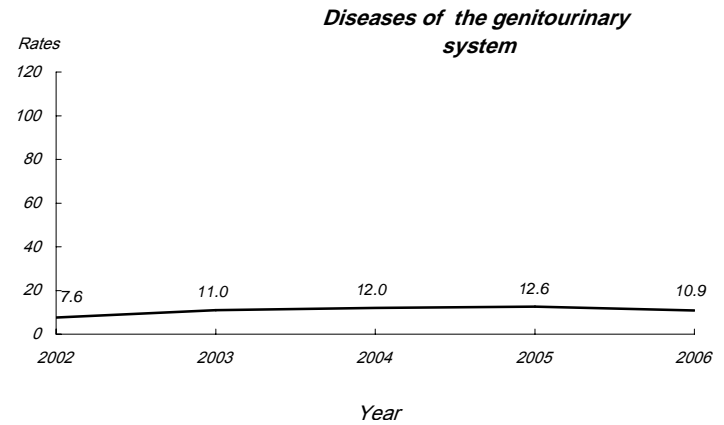
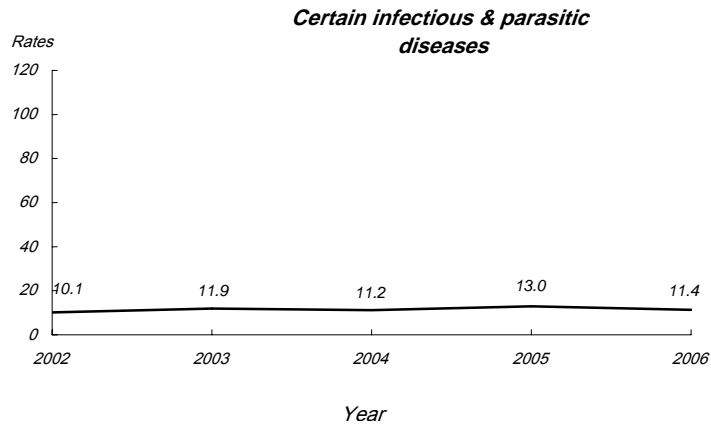
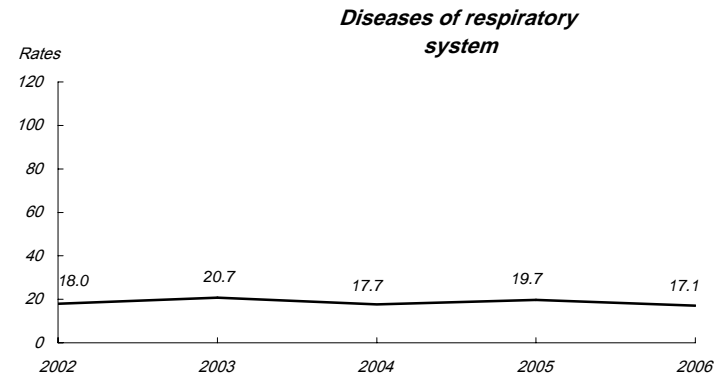
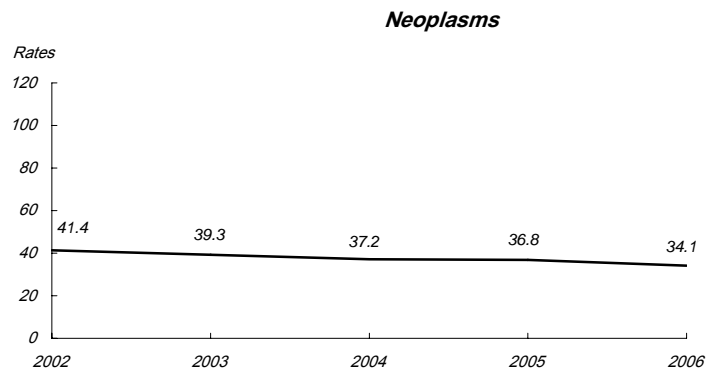
Deaths include some visitors .

Occurrence of the 10 leading causes are based on the fasal year, therefore some previous years rates might be affected .

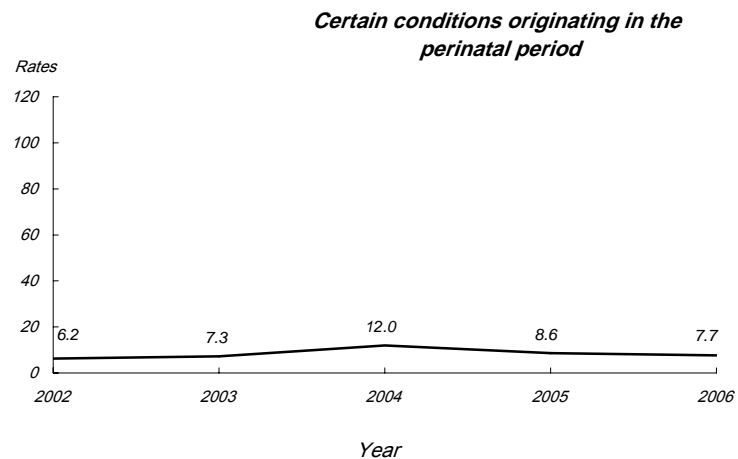
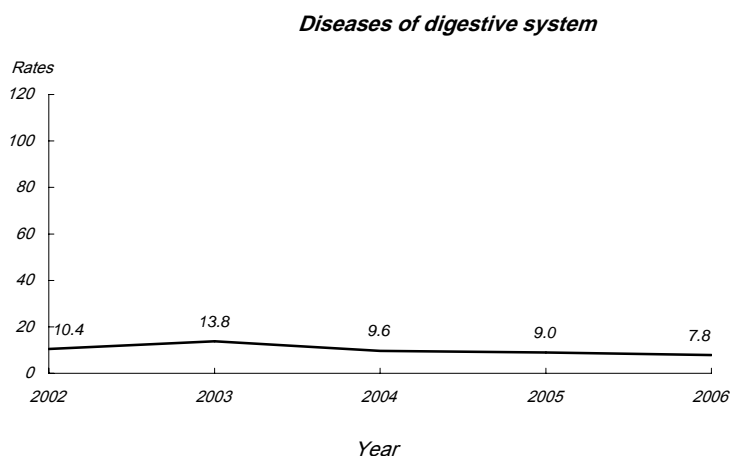
Figure 3.6
2006 - 2002 **100,000**
The Top Ten Leading Causes of Death Rates Per 100,000 Population 2002 - 2006



(Cont'd) Figure 3.6 ()
 2006 - 2002 100,000
 The Top Ten Leading Causes of Death Rates Per 100,000 Population 2002 - 2006



(Cont'd) Figure 3.6 ()
 2006 - 2002 100,000
 The Top Ten Leading Causes of Death Rates Per 100,000 Population 2002 - 2006



Reference: Table 3.15

مرجع: جدول 3.15